

# ALL-IN-ONE CONSTRUCTION



精進建築有限公司

Aggressive Construction Company Limited

精進建築工程有限公司

Aggressive Construction Engineering Limited



## 目錄 Contents

- 1 ◆ 關於精進建築有限公司  
Aggressive Construction Company Limited
- 2-3 ◆ 締造一站式建築項目 結合多元化工程服務  
A truly one-stop specialist construction developer offering end-to-end project service convenience
- 4-29 興聯集團的核心信念
  - ◆ Great Harvest Group Core Principles
    - 持續改進信念  
提供全面指標定位服務  
Maximizing clients' cost efficiency with a genuinely 360° construction solution
      - 項目及工程  
Projects and Works
    - 管理務實創新  
追求最佳項目效益  
A pragmatic management philosophy that ensures maximum benefits
      - 項目及工程  
Projects and Works
    - 持守誠信廉潔  
弘揚團隊精神  
Teamwork empowered by professionalism, integrity and honesty
      - 項目及工程  
Projects and Works
- 30-31 ◆ 項目清單  
Job List
- 32-33 ◆ 發揮現有優勢 把握未來機遇  
Accelerating current strengths to ensure successful future developments

# 關於精進建築有限公司

## Aggressive Construction Company Limited

精進建築由2004年已成為香港屋宇署一般建築承建商之一，並且多年來在業界建立了不少成功的業績，參建項目中包括住宅、商業寫字樓、學校、公共設施等發展項目。

A registered General Building Contractor with the HKSAR Government Buildings Department since 2004, Aggressive Construction Company Limited (Aggressive) has built up a first-rate track record for helping to successfully develop local residential buildings, commercial offices, schools and public facilities.





# 締造一站式建築項目 結合多元化工程服務

A truly one-stop specialist construction  
developer offering end-to-end project  
service convenience

興聯集團成立於一九八九年，矢志成為具有良好商譽的建築及房地產發展公司，對客戶及產品竭誠提供高承擔力及持續改進服務水準。核心業務起初集中在專項建築及精品式房地產發展，在二零零四年已成為主要承建商和多元化項目開發公司；其後積極拓展多元化及一站式包設計、入則和製造等服務，範圍有鋁窗/玻璃幕牆、預製混凝土構件、混合系統模板，外牆乾掛雲石/印花英坭板飾面、裝修設計等各項與建築相關的業務。

集團一直堅守三個核心信念，從而建立獨有的品牌，引領達到長遠的發展目標。

- 持續改進信念 提供全面指標定位服務
- 管理務實創新 追求最佳項目效益
- 持守誠信廉潔 弘揚團隊精神

Established in 1989, Great Harvest Group (the Group) is committed to establishing itself as a reputable construction company delivering exceptional levels of reliability. Our expert professionals continue to work hard to enhance the Group's specialist construction and fitting-out services. Initially focused on construction projects, the Group began successfully evolving into a principal contractor specialist in 2004 and now actively develops a range of diversified, all-in-one services ranging from design and statutory submission right through to final production. In addition to aluminum windows/curtain walls, our proven expertise spans everything from composite system formworks, precast facades, external stone claddings, decorative cement boards, design and decoration.

In striving to achieve and sustain our long-term business goals, our management and staff adhere to the following three core principles:

- Maximizing clients' cost efficiency with a genuinely 360° construction solution
- A pragmatic management philosophy that ensures maximum benefits
- Teamwork empowered by professionalism, integrity and honesty



## 一站多元服務 接合天衣無縫

與聯集團旗下的公司各有專長，更可聯合提供一站式建築服務：

**精進建築有限公司**承建各種建築工程項目，從入則到落實完工，全力承包；**先越高科有限公司**負責外裝(外牆)項目，如玻璃幕牆及鋁窗等；而**卓越天工有限公司**專門提供精裝(室內設計)服務，按照客戶要求以達到理想效果。

全面的建築服務由建築至內裝，讓客戶獲得最高成本效益。

### Genuinely seamless one-stop service excellence

Great Harvest Group's various subsidiary companies are all recognized experts in their own specialist fields and are renowned for their highly effective collaboration when required to offer one-stop solutions.

**Aggressive's** extensive range of services spans almost every key aspect of construction – from the preparation of detailed initial plan submissions to final building work. **Forerunner Specialist Limited (Forerunner)** undertakes precast facade construction for outer walls, glass curtainings and aluminum windows. **Superb Interior Contracting Company Limited (Superb)**, meanwhile, specializes in the fitting out of interior designs that satisfy exacting clients' highest standards.

Our total build to fitting-out solution ultimately ensures the maximization of cost efficiency for every client.



# 持續改進信念 提供全面指標定位服務

Maximizing clients' cost efficiency with  
a genuinely 360° construction solution

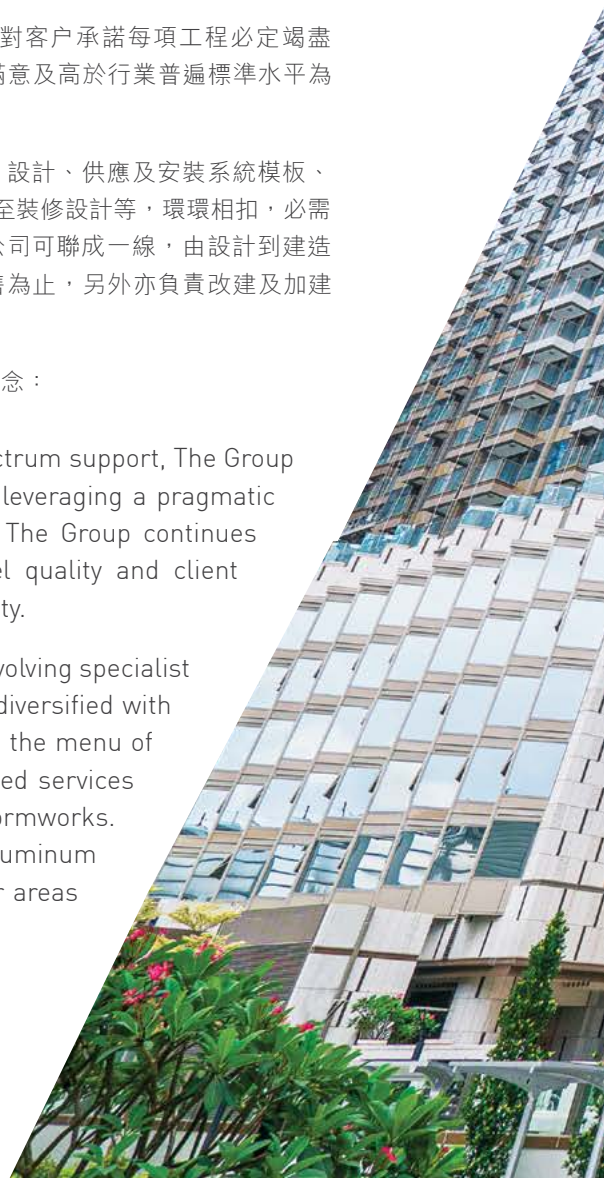
興聯集團追求實事求是，採取務實但尋求突破傳統思維的作風，對客戶承諾每項工程必定竭盡所能，以主動、積極的態度及實際的行動，務求令工作做到客戶滿意及高於行業普遍標準水平為最低指標。

集團深明地產客戶對承辦商的要求日漸多元化，除了建築工程外，設計、供應及安裝系統模板、預製混凝土構件、鋁型材製品設計、供應及安裝鋁窗/幕牆、園藝以至裝修設計等，環環相扣，必需可靠的一站式服務，才能獲得最大的協同效益。興聯旗下的專業公司可聯成一線，由設計到建造以及室內設計均能一手承辦，並直至所有建築工序完成驗收及銷售為止，另外亦負責改建及加建工程等工作。

以下是一些主要的建築項目充份地展示出集團的全方位建築服務的理念：

Committed to delivering on its promise of top quality full-spectrum support, The Group strives tirelessly to achieve practicality and sustainability by leveraging a pragmatic yet break-through approach in every project it undertakes. The Group continues to underline its growing reputation for achieving high-level quality and client satisfaction via unrivalled dedication, proactivity and practicality.

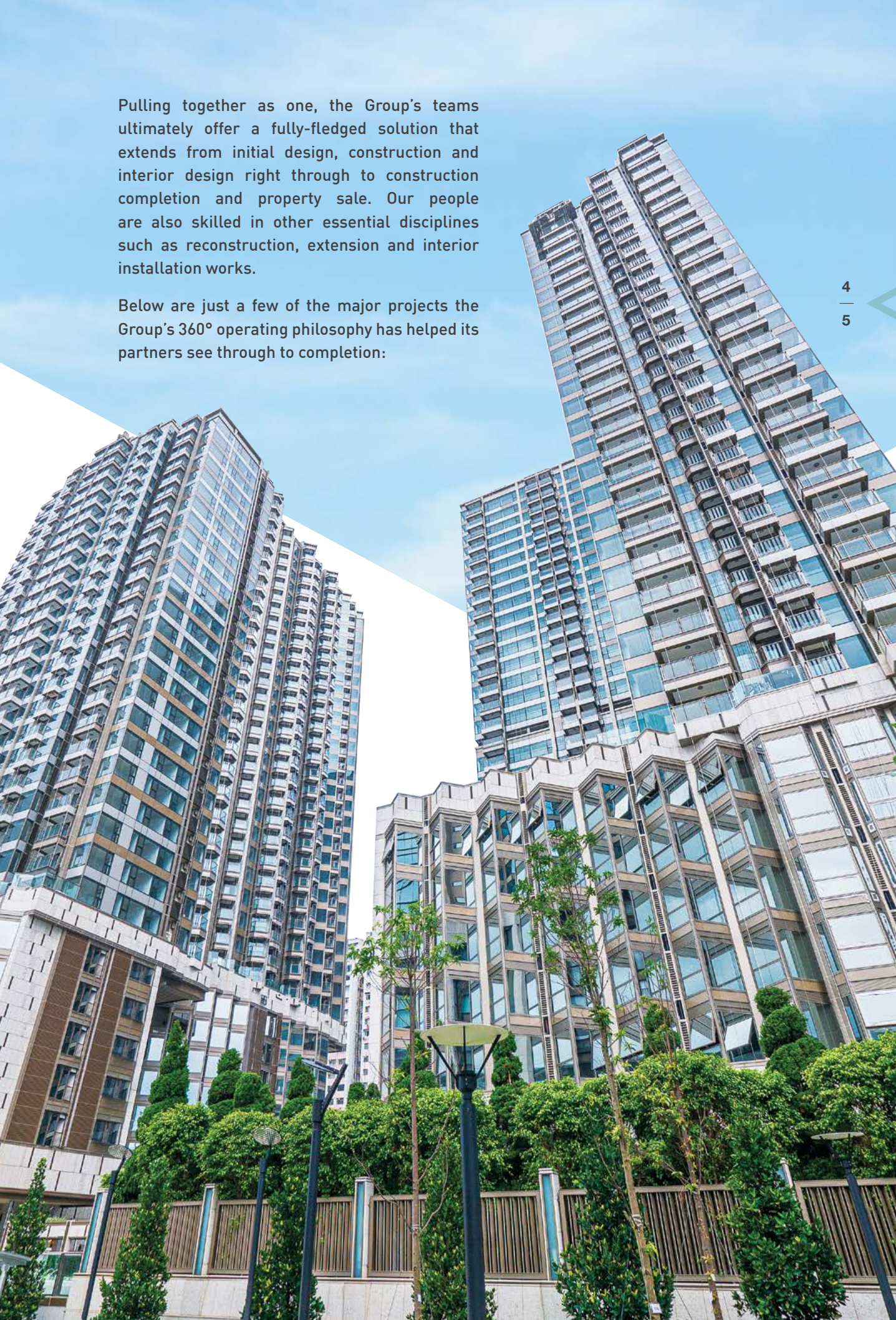
The Group's management fully understands that the rapidly evolving specialist needs of property developers are becoming more and more diversified with every passing year. As a result, as well as construction work, the menu of specialties on offer to clients now covers reliable inter-related services including the design, supply and affixing of composite system formworks. The design, the supply and installation of precast facades, aluminum windows/ curtain walls, landscaping and gardening are other areas in which the Group and its subsidiaries excel.





Pulling together as one, the Group's teams ultimately offer a fully-fledged solution that extends from initial design, construction and interior design right through to construction completion and property sale. Our people are also skilled in other essential disciplines such as reconstruction, extension and interior installation works.

Below are just a few of the major projects the Group's 360° operating philosophy has helped its partners see through to completion:





# 海之戀

OCEAN PRIDE







沿岸物業發展項目包括於營運中的港鐵車站上蓋興建五座住宅大樓及四層高的平台，及一條長約60米、闊13米及離地面12米高的新建鋼鐵行車天橋，作為連接平台之用。另外，項目亦包括兩層地庫停車場。合約總額超過30億元。

This prestigious bayside property development consists of five high-rise residential towers plus a fourth-level podium atop of an operating MTR station. Other project highlights include a structural vehicle link bridge, which measures 60m in length, 13m wide and stands 12m high above the ground. Besides, the project also includes a two-level underground carpark. The total value of this contract was over HK\$3 billion.

落成年份  
year of completion  
2019 . 08





# 維港頌

## HARBOUR GLORY

一個享有維港景觀綜合發展項目，總建築樓宇面積超過十萬平方米，包括4層地庫、1層平台和7座住宅及酒店大樓，共提供840間酒店房間及378個住宅單位。

A comprehensive development with CFA over 100,000m<sup>2</sup>, includes a four-level basement, a one-level podium and seven hotels and residential towers housing 840 guest rooms and 378 residential apartments.

落成年份  
year of completion  
2019 . 12









# 維港·星岸

STARS BY THE HARBOUR







10

11

維港·星岸發展項目包括四座多類型單位住宅大樓和九座獨立房屋，通過三座有蓋特色行人天橋提供二十四小時通道連接到附近建築物。

This major development consists of four multi-unit buildings and nine houses with three unique covered footbridges offering 24-hour access to nearby properties.

落成年份  
year of completion  
2016 . 01





# 管理務實創新 追求最佳項目效益

A pragmatic management philosophy  
that ensures maximum benefits





集團一貫主張勇於承擔及追求卓越的產品質素；管理概念主張務實創新、言出必行及高透明度，並圍繞成本、進度和質量上積極追求持續發展及進步。

興聯提倡對業務進行高風險的全面管理模式，在建築材料製成品採購流程上進行風險評估及控制，對繁複、高風險及重要的工作，由集團直接負責做設計和入則、控制生產及管理而不作分判。價格高昂及需經過工程上特別設計的建築材料/製成品如雲石、鋁型材料、鐵模板等，亦直接購買、監控生產質量及來貨時間，以達到更強的競爭能力。

在供應鏈方面，集團確保工程材料在物流安排上，包括由最基本的生產設計、工廠包裝、中途運輸、到達地盤時的安裝等，都由集團採購部全面掌握及控制，不交由分判商作個別處理，確實在成本及工序方面達到最佳的效益。

自一九八九年以來，興聯一直採取直接勞動管理機制/實踐個體戶或最低層次的分包商，開展建設工程，從事泥水行業和雜項工程。隨著有效控制勞動力資源的成功，並通過這種機制/實踐中的運用，興聯集團已擴大了此系統至覆蓋其他專業工程，包括鐵模板、石材/大理石工種、鋁模板、鋁飾面板、鋁窗/趟門、玻璃幕牆和預製件外牆，為客戶降低成本。

集團亦避免分工過細及過於流程化的運作，造成制度僵化及處事墨守成規。

The Group does everything possible to ensure accountability when striving to deliver product quality excellence. Advocating practicality with innovation, we have always been firm believers in practicing what we preach and always do our utmost to ensure highly transparent management directives. In doing so, we closely follow a business model centered on sustainable development plus the ongoing upgrading of quality and cost-effectiveness.

When entrusted with the management of high-risk construction activities, our knowledgeable specialists will first assess any potential difficulties and then take charge of the procurement of competitively-priced construction materials and products. In accepting responsibility for complex, potentially problematic critical processes like design and plan submission, we handle

everything in house and will not sub-contract out important tasks.

The Group is also heavily involved in the direct procuring of high-value construction materials and products that require specialized craftsmen and designers. Specialties in which we ensure competitiveness by carefully monitoring stock quality and availability include marble and stone cutting, steel and aluminum formwork and precast facade units.

The Group's philosophy when it comes to supply chain operation is one of total management. To this end, rather than simply sub-contracting tasks out via our Procurement Department, we will assume full control of the supply chain for all essential building materials and equipment. In addition to product design, typical tasks to be undertaken at this stage include packaging, transportation and on-site installation. As always, our ultimate aim is to ensure our clients enjoy optimal cost and process effectiveness at all times and in all areas of our work.

In 1989, the Group began implementing direct labor management practices for all self-employed workers or lower-tier sub-contractors carrying out sundry wet trade construction work on site. Our resultant success in more effectively controlling labor resources utilization means we have now expanded this approach into other highly specialized disciplines. Fields in which we can now help clients to measurably lower their costs include large panel steel forms, stone/marble works, aluminum handset formworks, aluminum claddings, aluminum windows/sliding doors, glass walls and precast facades.

In moving forwards, the Group is taking great care to avoid any reliance on the excessive division of responsibilities and the implementation of over-sophisticated procedures that may create inflexible systems and stereotypical management.

Below is a list of just a few further high-profile projects the Group's expert professionals have played a major role in constructing:



# 長沙灣凱樂苑及海盈邨 居屋及公屋發展項目

PUBLIC HOUSING DEVELOPMENT PROJECT  
HOI LOK COURT AND HOI YING ESTATE,  
CHEUNG SHA WAN







14

15

為當時房屋署最大合約金額的發展項目，  
並提供兩座公共房屋及五座居屋住宅大樓  
共3,841個單位。

The largest ever contract awarded in  
Hong Kong Housing Authority, this project  
includes two blocks public housing and  
five blocks Home Ownership Scheme  
fully 3,841 units.

落成年份  
year of completion  
2019 . 05



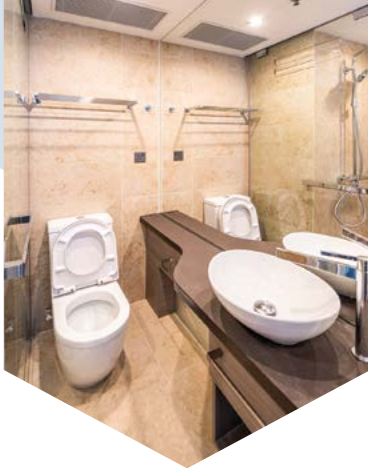


星淮酒店

STARPHIRE HOTEL







通州街酒店是位於大角咀的酒店項目，項目包括26層高的大樓，154間酒店房4層平台包括：大堂、停車場及餐廳。項目亦包括玻璃幕牆及外牆飾面工程，以及機電安裝工程。

Starphire Hotel is a hotel project located in Tung Chau Street, Tai Kok Tsui, which comprises a 26-storey building with 154 guest rooms and a 4-level podium containing a lobby, a parking lot and restaurants. The project also includes curtain walls and exterior claddings as well as electrical and mechanical installation.

落成年份  
year of completion  
2019 . 12



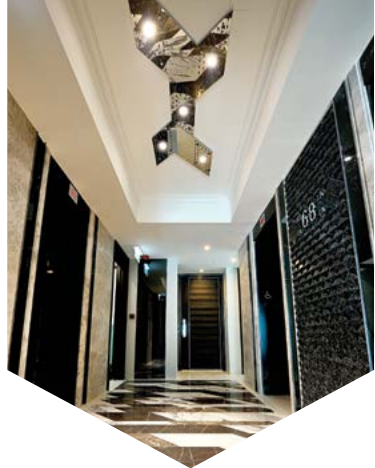


# 領凱

LE SPLENDEUR







公司第一個包辦設計、生產和安裝的外牆預製件和玻璃鋁質工程項目，而3座住宅大樓分別各有52、55及58樓層，其中一座的每一層外牆預製件更多達81件。

Aggressive's first truly project that integrated design, supply and installation commission involving precast elements, glass and aluminum work, this top quality residential project features towers of 52, 55 and 58 storeys and incorporates 81 precast facades in every single floor of one of the three towers.

落成年份  
year of completion  
—  
2013 . 12







## 世宙

YUCCIE SQUARE

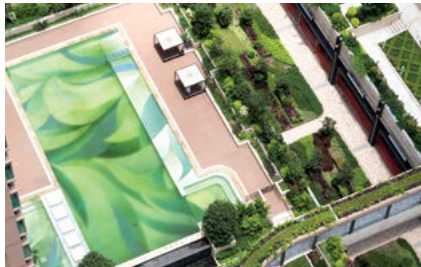
四座住宅大樓位於十字型特色商店大道「Yuccie Avenue」之上，配以當代歐洲建築風格設計，由玻璃、金屬配襯真石，營造如歐洲時尚購物大道的氛圍。

Located atop the iconic cross-shaped "Yuccie Avenue", the four residential towers here are designed in European architectural style. They are also finished in distinctive types of glass walling, metal and granite cladding that enhance the development's chic European lifestyle ambience.

落成年份

year of completion

2016 . 12



## 香葉道41號

41 HEUNG YIP ROAD

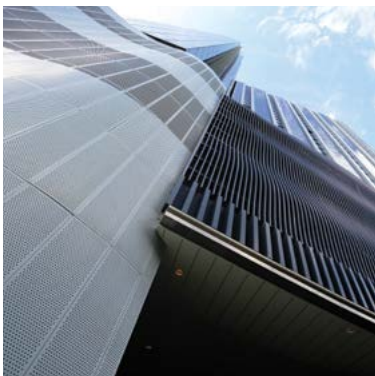
在22個月內完成4層地庫、4層平台和29層寫字樓，提供每層平均樓面面積達1,160平方米，富現代感外型設計，特別立體弧形鋁板飾面的辦公室大樓建築工程。

Constructed within just 22 months, this stylish 29-storey office complex offers an average floor area of 1,160m<sup>2</sup>. Its eye-catching, curved 3D aluminum cladding also houses a four-level basement and four-level podium.

落成年份

year of completion

2016 . 06





## 峻滢二期 THE BEAUMONT II

三座擁有歐洲式花園及城市綠化的住宅大樓，各座均有36層住宅樓層，而各座每層的外牆預製件更超過60件。

Enriched with a European garden and surrounded with lush urban greenery, the three 36-storey residential towers boast over 60 precast facades on every floor.

落成年份  
year of completion  
—  
2016 . 10





## 君珀

KENNEDY PARK

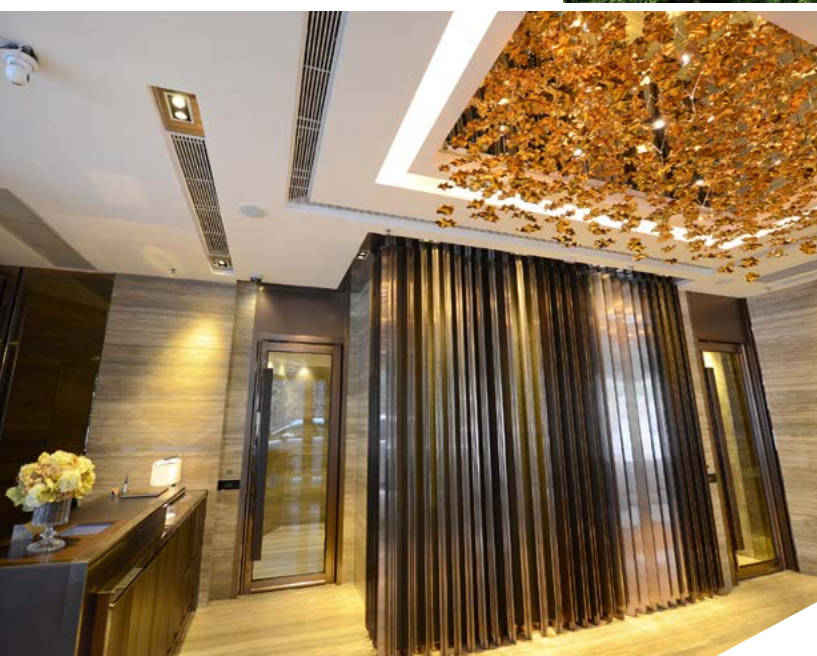
一座建於斜坡上的豪華獨立式住宅大樓，並享有中環和動植物公園的全景。項目包括7層平台和27層高住宅，並有一條新建行車天橋連接毗鄰大廈平台。

A luxury single block on a sloping site commanding panoramic views over the Territory's Central CBD and Botanical Gardens, this 27-storey tall residential tower integrates a seven-level podium plus a vehicle link bridge to a neighboring building.

落成年份

year of completion

2014 . 05







22

23

## 丰匯

TRINITY TOWERS

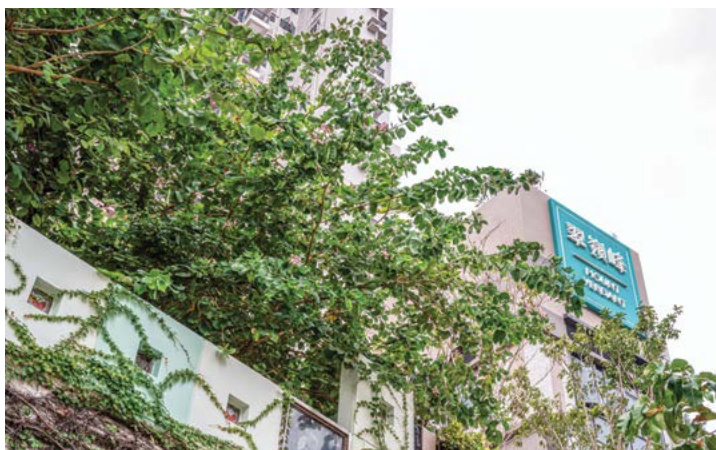
丰匯屋苑前身為香港中文大學新亞書院舊址，屋苑外牆雲石刻有大學名稱「新亞」及校訓「誠明」，乃項目設計特色之一。

Trinity Towers is positioned on the former site of the New Asia College of The Chinese University of Hong Kong with the college's name 「新亞」 and 「誠明」 motto carved on the granite cladding.

落成年份  
year of completion  
2015. 03







翠嶺峰

MOUNT VERDANT

翠嶺峰是由香港房屋協會發展的資助出售房屋項目，屋苑以單座式設計，樓高37層，共有330個單位，設有4層平台包括：商店、地庫停車場及多功能房。

Mount Verdant is a Subsidized Sale Flats project developed by Hong Kong Housing Society. With a single-block design, the 37-storey building provides 330 residential units on top of a 4-level podium including shops, a underground parking lot and multi-function rooms.

落成年份

year of completion

2019 . 12







## 聖保羅男女中學 ST. PAUL'S CO-ED COLLEGE EXTENSION

超過18個需要呈給屋宇署審批的設計和建造項目工程，並需在630天內於斜坡的地盤中完成施工，工程包括建造課室、實驗室、宿舍、演講廳和室內籃球場等。

Following the submission of 18 proposed items to be designed and built on a sloping site for Building Department approval, all works, including classrooms, laboratories, a dormitory, a lecture theater and an indoor basketball court, were completed within just 630 days.

落成年份  
year of completion  
2012 . 01



## 恒和中心 CONTINENTAL PLACE

在香港繁忙的商務中心區興建的商業建築工程項目，達至零檢控、零意外之工程。

Construction of Continental Place in the heart of the Territory's bustling Central CBD was successfully co-ordinated with zero prosecutions or accidents.

落成年份  
year of completion  
2016 . 07





# 持守誠信廉潔 弘揚團隊精神

Teamwork empowered by professionalism,  
integrity and honesty

集團致力建構專業的企業文化，以誠信、廉潔、堅持、互動及靈活為基礎信念，發揮互相扶持及共同承擔的團隊精神。

興聯的管理團隊由業界資深人士組成，擁有專業資歷以及豐富的管理經驗，切實執行集團的既定目標。集團採用簡單及扁平式的內部結構，推行清晰、直接及高透明度的管理政策，並與員工經常緊密溝通。

集團十分著重人才的培訓及發展，協助員工增強技能及專業知識，亦不斷招聘不同科目的畢業生及人才加以培養，以配合未來的業務發展。

興聯員工保持嚴緊的紀律及持續改進工作成效，具有主動性、責任感及承擔力，亦必須有廉潔及誠信的操守。

自成立以來，我們一直堅守以上原則，此企業文化正是集團扎根的關鍵所在。

In fostering a team spirit based on joint accountability, the Group has never stopped striving to create and preserve a professional corporate culture which emphasizes uncompromising integrity, honesty, persistence, interaction and flexibility.

Our Company's visionary senior management team is made up of a variety of well-regarded and highly qualified construction industry professionals who provide our people with the clear focus they need to move the Group forward. In doing so, they continue to emphasize the benefits of a simpler, leaner structure that promotes not only closer communications amongst staff but also measurable benefits for clients.

To ensure the successful evolution of our employees' skills and professional knowledge. The Group places significant emphasis on staff training and development. We also continue to source top professionals and young talents from various backgrounds and provide the solid nurturing they need to achieve their full personal and professional potential as future leaders.

In advocating strict integrity and continuous work improvement since day one, the Group is determined to equip our staff with a sense of responsibility and accountability, plus a code of conduct that encourages integrity and honesty.

Below are the names of just a few more of the many notable successes the Group has been involved in these past few years:









## 澳門 THE PARISIAN

巴黎人是一間擁有世界第二大賭場的豪華酒店。該項目最大的挑戰是圍繞着平臺外圍安裝超過10米高的預製件。

A luxury hotel boasting the world's second largest casino, this project required our engineers to install a 10m-high external facade around a difficult-to-access podium envelope.

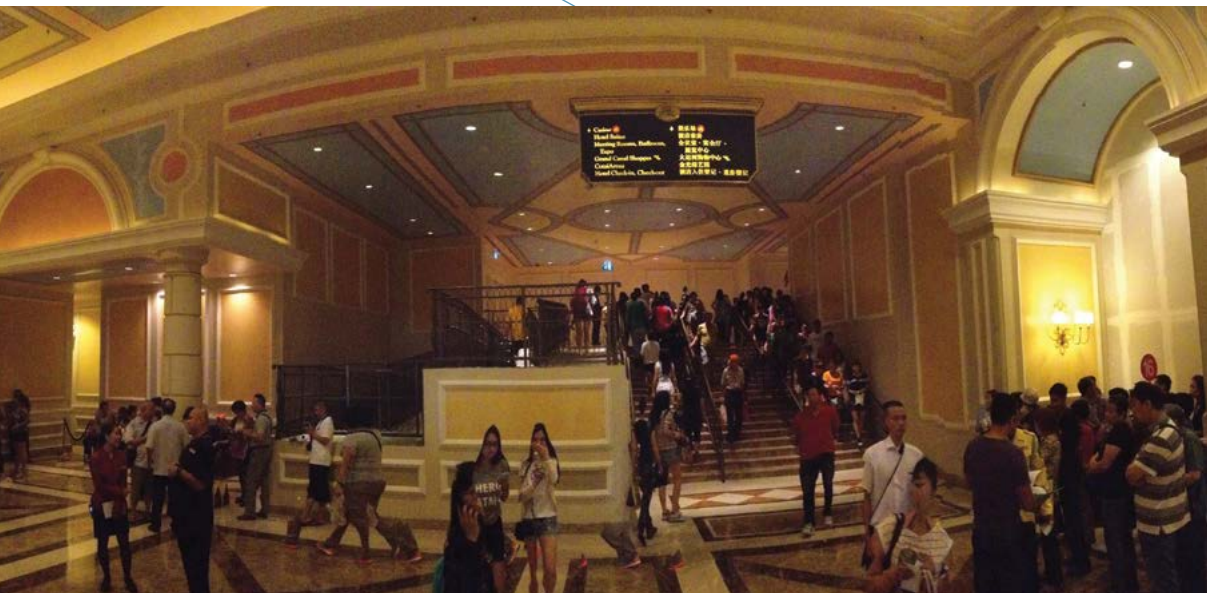
落成年份  
year of completion  
2016 . 06

## 澳門 VENETIAN HOTEL WEST BUS LOBBY A&A WORKS

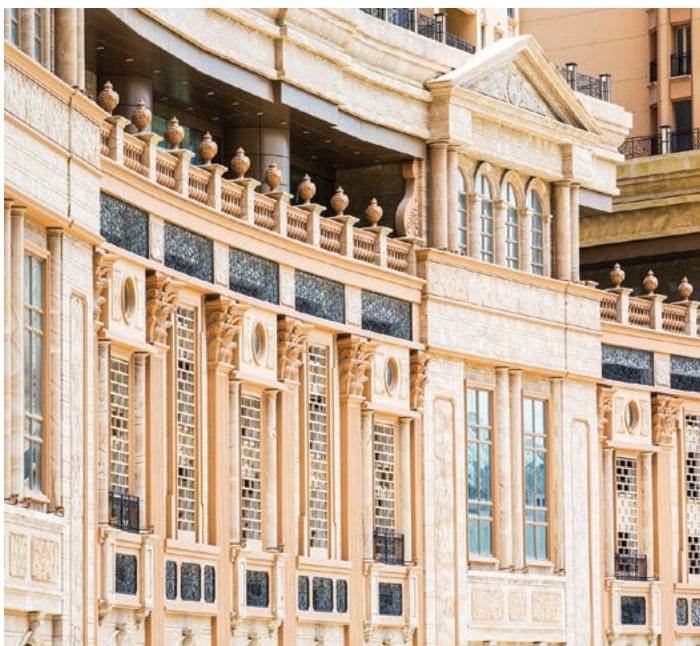
在24小時營運中的酒店大堂加建及改動工程，其中包括樓梯、殘疾人專用斜面行人道及升降台配合原有裝修物料。

Alterations and additions (A&A) work integrating a new staircase, disabled ramp and lift with existing decorations in the hotel's 24-hour lobby were successfully completed without any disruption to the daily routines of either staff or guests.

落成年份  
year of completion  
2016 . 03







28

29

## 名門世家 WINDSOR ARCH



名門世家是一個鑑賞級豪宅，以英國皇室曾入住的Brocket Hall為設計概念，令整個屋苑及其十座住宅大樓充滿十五世紀英倫風味。

An 'appreciation-level' luxury apartment block, Windsor Arch's design concept is based on Brockett Hall the one-time residence of the British Royal Family. The estate comprises 10 residential towers whose residents adore the development's uniquely 15<sup>th</sup> century English charm.

落成年份  
year of completion  
2014 . 07





# 項目清單

## JOB LIST

項目名稱 Project Name	建築商 Developer	合同期限 Contract Period
01 新界屯門第48區青山公路-青山灣段屯門市地段第547號住宅發展項目 Proposed Residential Development at TMTL 547, Castle Peak Road - Castle Peak Bay, Area 48, Tuen Mun, NT	香港小輪(集團)有限公司及帝國集團控股有限公司 恒基兆業地產有限公司 HONG KONG FERRY (HOLDINGS) CO. LTD. & EMPIRE GROUP HOLDINGS LIMITED HENDERSON LAND DEVELOPMENT COMPANY LIMITED	2019.11 - 2021.11
02 啟德車站廣場建造工程(第二期) 合約編號: SS H508 Constructin of Station Square at Kai Tak (Phase 2) Contract No.: SS H508	建築署 ARCHITECTURAL SERVICES DEPARTMENT	2019.09 - 2022.04
03 新蒲崗彩虹道210-212號 & 五芳街15-17號商業大廈發展項目 Proposed Commercial Development at 210 & 212 Choi Hung Road and 15 & 17 Ng Fong Street, N.K.I.L. 4854, San Po Kong	UPPERMAX COMPANY LIMITED	2019.08 - 2021.04
04 荃灣西鐵站(五區)灣畔改建及加建工程 - 海之戀商業平台 Alteration and Addition Works for the Commercial Podium Proposed Tsuen Wan Property Development TW5 Bayside West Rail Tsuen Wan West Station	香港鐵路有限公司及長江實業 MTR CORPORATION LIMITED & CHEUNG KONG (HOLDINGS) LTD.	2019.05 - 2019.11
05 東涌第54區資助出售房屋發展計劃建築工程 合約編號: 20180305 Construction of Subsidised Sale Flats Development at Tung Chung Area 54 Contract No.: 20180305	香港房屋委員會及房屋署 HONG KONG HOUSING AUTHORITY	2019.04 - 2021.08
06 九龍灣宏展街香港郵政總部大樓建造工程 合約編號: SS F508 Construction of Hong Kong Post Headquarters Building at Wang Chin Street, Kowloon Bay Contract No.: SS F508	建築署 ARCHITECTURAL SERVICES DEPARTMENT	2019.04 - 2021.11
07 葵涌荔景山道公共房屋發展項目及上水彩園路擴建行人天橋工程 合約編號: 20170457 Contruction of Public Rental Housing Development Near Lai King Hill Road & Extension of Footbridge and Cycle Parking Area at Choi Yuen Contract No.: 20170457	香港房屋委員會及房屋署 HONG KONG HOUSING AUTHORITY	2018.10 - 2021.02
08 將軍澳86區地段70號日出康城第八期住宅發展項目 Residential Development at Site H and Estate Road of Tseung Kwan O Area 86, TKOTL 70 R.P. LOHAS Park Package 8, Tseung Kwan O	香港鐵路有限公司及長江實業 MTR CORPORATION LIMITED & CHEUNG KONG (HOLDINGS) LTD.	2018.03 - 2021.05
09 將軍澳73A區出售房屋項目 - 翠嶺峰 Subsidized Sale Flats Project at Tseung Kwan O Area 73A - Mount Verdant	香港房屋協會 HONG KONG HOUSING SOCIETY	2017.10 - 2019.11
10 大角咀通州街103-105號酒店發展項目 - 星淮酒店 Proposed Hotel Development at 103-105 Tung Chau Street - Starphire Hotel	卓輝發展有限公司 EXCELLENT BRIGHT DEVELOPMENT LTD.	2017.07 - 2019.12
11 北角油街綜合發展項目 - 維港頌 Proposed Comprehensive Development at Oil Street, North Point - Harbour Glory	長江實業 CHEUNG KONG (HOLDINGS) LTD.	2016.06 - 2019.12
12 長沙灣副食品批發市場3號及5號地盤第1期及第2期公共房屋和資助房屋發展計劃建築工程 - 凱樂苑及海盈邨 合約編號: 20150055 Construction of Public Housing at Chueng Sha Wan Wholesale Food Market Site 3 & Site 5 Phase 1 & 2 - Hoi Lok Court & Hoi Ying Estate Contract No.: 20150055	香港房屋委員會及房屋署 HONG KONG HOUSING AUTHORITY	2015.11 - 2019.05
13 荃灣西鐵站(五區)灣畔住宅發展項目 - 海之戀 West Rail Tsuen Wan West Station - TW5 Bayside Property Development - Ocean Pride	香港鐵路有限公司及長江實業 MTR CORPORATION LIMITED & CHEUNG KONG (HOLDINGS) LTD.	2015.06 - 2019.08
14 澳門巴黎人 The Parisian	威尼斯人路氹有限公司 VENETIAN COTAI LIMITED	2015.03 - 2015.12 2013.10 - 2016.09 2014.06 - 2015.12
15 新界元朗518號地段住宅發展項目 - 世宙 Proposed Property Development at Yuen Long Town Lot No. 518, New Territories - Yuccie Square	長江實業 CHEUNG KONG (HOLDINGS) LTD.	2014.11 - 2016.12
16 威尼斯人澳門氹仔發展項目 Venetian Hotel West Bus Lobby A&A Works	威尼斯人路氹有限公司 VENETIAN COTAI LIMITED	2014.09 - 2015.07

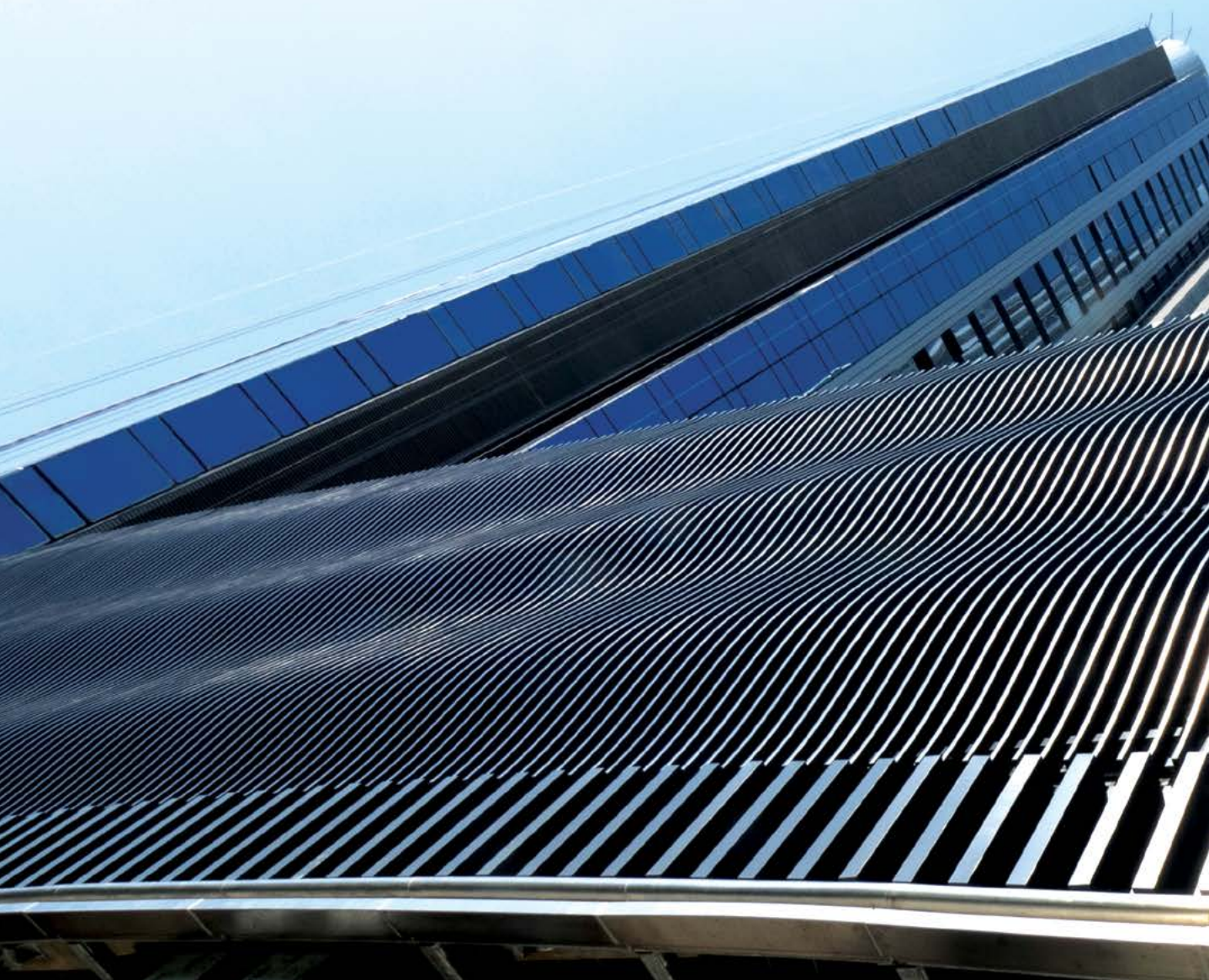


項目名稱 Project Name	建築商 Developer	合同期限 Contract Period
17 黃竹坑香葉道41號商業大廈發展項目 Office Development at No. 41, Heung Yip Road, Wong Chuk Hang	長江實業 CHEUNG KONG (HOLDINGS) LTD.	2014.01 - 2016.06
18 將軍澳石角路6號住宅發展項目 - 峻瀝二期 Residential Development at TKOTL111, Area 85 Site B, Tseung Kwan O - The Beaumont II	長江實業 CHEUNG KONG (HOLDINGS) LTD.	2013.10 - 2016.07
19 中環德輔道中236-242號商業大廈發展項目 - 恒和中心 Proposed Commercial Development at No. 236-242 Des Voeux Road Central, Central - Continental Place	恒和集團 CONTINENTAL HOLDINGS LIMITED	2013.10 - 2016.07
20 金沙城中心 Sands Cotai Central Capital Works [A&A] Projects	威尼斯人路氹有限公司 VENETIAN COTAI LIMITED	2013.10 - 2014.03 2013.06 - 2014.01
21 威尼斯人澳門氹仔發展項目 五期及六期 Venetian Cotai Parcel 5 & 6 (Resumption) & Tropical Gardens	東方威尼斯人有限公司 VENETIAN ORIENT LIMITED	2013.06 - 2014.03 2010.09 - 2012.04
22 九龍紅磡地段K.I.L. 11120住宅項目 - 維港星岸 Kowloon Inland Lot No. 11120, Hung Hom, Kowloon - Stars By The Harbour	長江實業 CHEUNG KONG (HOLDINGS) LTD.	2013.03 - 2016.01
23 澳門名門世家 Windsor Arch Residential Development at Lou Lim Leok (Phase 1, Phase 2 & Phase 3)	威得利企業發展股份有限公司 EMPRESA DE DESENVOLVIMENTO PREDIAL VITORIA, SA	2012.07 - 2016.06 2011.06 - 2013.09 2009.10 - 2012.03
24 九龍深水埗荔枝角道/桂林街及醫局街市區重建局住宅發展項目 - 丰滙 Composite Buildings for URA Lai Chi Kok Road / Kweilin Street and Yee Kuk Street Development, NKIL No. 6494, Shamshuipo, Kowloon - Trinity Towers	長江實業及市區重建局 CHEUNG KONG (HOLDINGS) LTD. & URBAN RENEWAL AUTHORITY	2012.06 - 2015.03
25 堅尼地道4號住宅發展項目 - 君珀 Residential Development at 4 Kennedy Road, Hong Kong - Kennedy Park	長江實業 CHEUNG KONG (HOLDINGS) LTD.	2012.04 - 2014.05
26 威尼斯人澳門氹仔發展項目 五期及六期 Cotai Parcel 5 & 6 (Resumption) & Tropical Gardens	威尼斯人路氹有限公司 VENETIAN COTAI LIMITED	2010.12 - 2012.06
27 香港麥當勞道33號聖保羅男女中學李莊月明樓擴展工程總承包合約 Proposed Extension of St. Paul's Co-educational College, 33 Macdonnell Road, Hong Kong, H.K.I.L. - 8203 Main Contract	聖保羅男女中學 ST. PAUL'S CO-EDUCATIONAL COLLEGE	2010.08 - 2012.01
28 將軍澳86區地段70號日出康城第二期住宅發展項目 - 領凱 Proposed Residential Development Package Two (Phase 3) at TKOTL No. 70, Area 86, Tseung Kwan O - LaSplendeur	香港鐵路有限公司及長江實業 MTR CORPORATION LIMITED & CHEUNG KONG (HOLDINGS) LTD.	2010.02 - 2013.05
29 新加坡 濱海灣金沙酒店 Hotel Development at Singapore - Marine Bay Sands	拉斯維加斯金沙集團 MARINE BAY SANDS PTE LTD.	2008.08 - 2010.08
30 威尼斯人澳門氹仔發展項目 五期及六期 Venetian Orient Parcel 5 & 6	威尼斯人路氹有限公司 VENETIAN COTAI LIMITED	2008.08 - 2008.10 2008.01 - 2008.10
31 新界天水圍24地段33區停車場及住宅發展項目 二期 - 栢慧豪庭 G.I.C./Public Carpark and Residential Development (Phase 2) at TSWTL No. 24, Area 33, Tin Shui Wai, N. T. - Central Park Towers II	長江實業 CHEUNG KONG (HOLDINGS) LTD.	2008.03 - 2010.11
32 威尼斯人澳門氹仔發展項目 二期 The Venetian Macao, Parcel 2, Cotai Resort Development	威尼斯人路氹有限公司 VENETIAN COTAI LIMITED	2008.02 - 2010.03 2008.02 - 2009.06
33 澳門金沙 Sands at Macau	澳門金沙 LAS VEGAS SANDS	2007.01 - 2007.09
34 威尼斯人澳門氹仔發展項目 一期 The Venetian Macao, Parcel 1, Cotai Resort Development	威尼斯人路氹有限公司 VENETIAN COTAI LIMITED	2006.06 - 2007.11
35 澳門美高梅 MGM Grand Macau with hotel guestrooms	美高梅金殿超濠(香港)有限公司 MGM GRAND PARADISE LTD.	2006.06 - 2007.07



# 發揮現有優勢 把握未來機遇

Accelerating current strengths to ensure  
successful future developments





隨著成功進入香港的房地產市場，集團將繼續尋找在香港及國內適合的物業發展項目，加強在香港的總承辦建築合約工程及開拓多類專項承判工程業務，並打造一站式的建築工程項目，為客戶提供一個完整的產品服務。

有見於澳門及新加坡近年經濟蓬勃，集團亦正積極參與當地的建築工程項目，未來亦會在可批准輸入外勞的國家及地方發展與建築有關的業務。

Leveraging our parent group's success in the fiercely competitive local real estate market, we will continue searching for relevant property development opportunities in both Hong Kong and China. In looking ahead, we will also continue to do our utmost to cement our status as a principal contractor for top construction projects. In exploring different specialized sub-contracting opportunities, it remains our intention to create successful all-in-one construction project solutions for clients old and new.

Given the successful sustained development of Macau and Singapore, the Group is now proactively participating in several blue-chip construction projects in both markets. It is anticipated that the Group will continue to develop its construction-related businesses in other countries and regions that allow imported labor.







興聯集團發展有限公司  
Great Harvest Group Development Limited

精進建築有限公司  
Aggressive Construction Company Limited

精進建築工程有限公司  
Aggressive Construction Engineering Limited

先越高科有限公司  
Forerunner Specialist Limited

卓越天工有限公司  
Superb Interior Contracting Company Limited

精進土木及地基工程有限公司  
Aggressive Civil & Foundation Engineering Limited

---

香港九龍新蒲崗大有街1號勤達中心23樓  
23/F., Midas Plaza, 1 Tai Yau Street, San Po Kong, Kowloon, Hong Kong  
Tel: (852) 3962 8688      Fax: (852) 2736 5338      Website: [www.ghg.com.hk](http://www.ghg.com.hk)

